

# MOUNTAIN TOP MINING

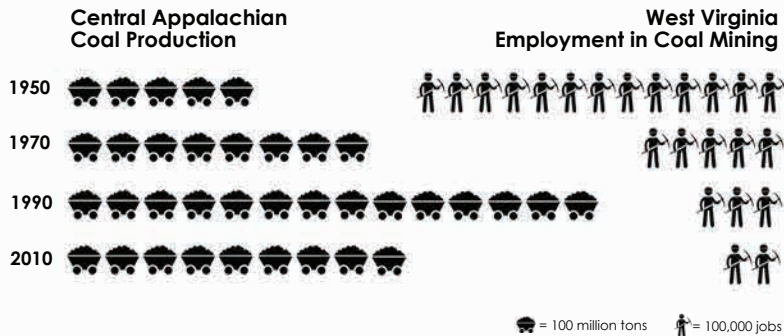
## A SUSTAINABLE REDEVELOPMENT PLAN

Gilbert Creek, WV

**AFFILIATION:** University of Wisconsin

**CONTRIBUTION:** Individual Studio Project

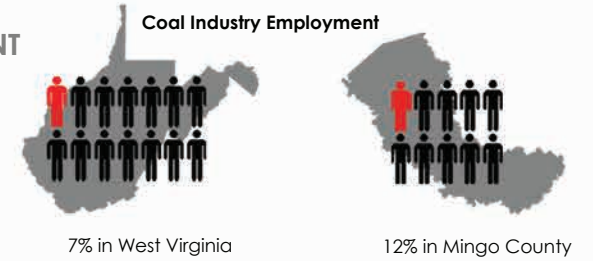
**MEDIA:** GIS, Illustrator, Photoshop



This project examines the social, economic and ecological issues resulting from mountain top removal mining (MTM) in geographically isolated and economically struggling communities of the Appalachia, such as Gilbert Creek, WV. MTM is often associated with lack of economic diversity and opportunity, poverty, environmental destruction and related health and social justice issues. The proposed plan emphasizes economic diversification through sustainable practices, and utilizing abandoned MTM sites as opportunities for environmental education, outdoor recreation, including for eco or adventure tourism.

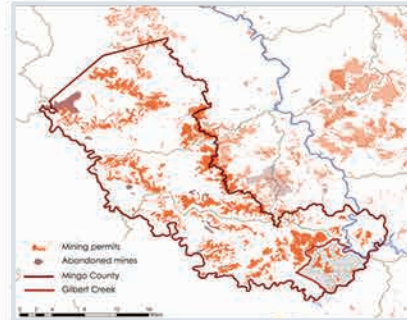
### COAL PRODUCTION & UNEMPLOYMENT

Advancement in technology has led to a decreased demand in the work force of coal mining even while production rose through the 20th century. Current trends show coal production declining, posing a great threat to many mining communities that rely heavily on the coal industry. Mingo County in WV has a heavy coal mining presence and houses many communities facing this threat, including Gilbert Creek.

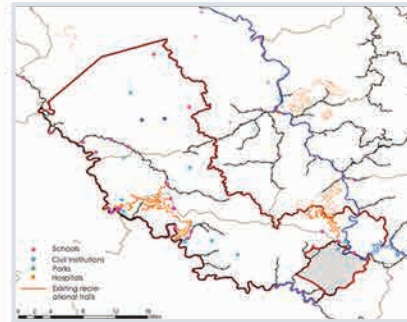


#### MINGO COUNTY

##### LAND DEGRADATION



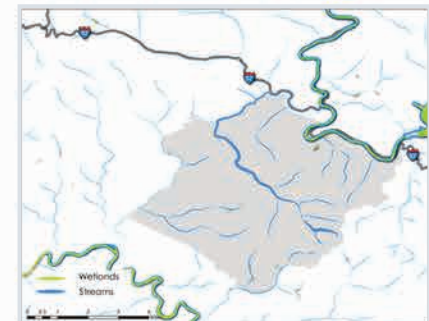
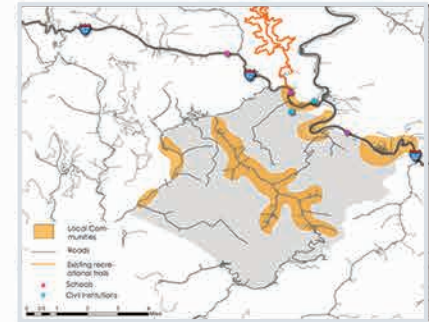
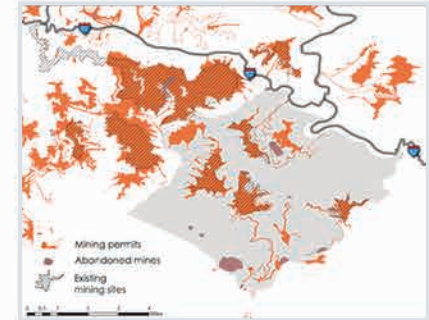
##### CULTURAL RESOURCES



##### NAURAL RESOURCES

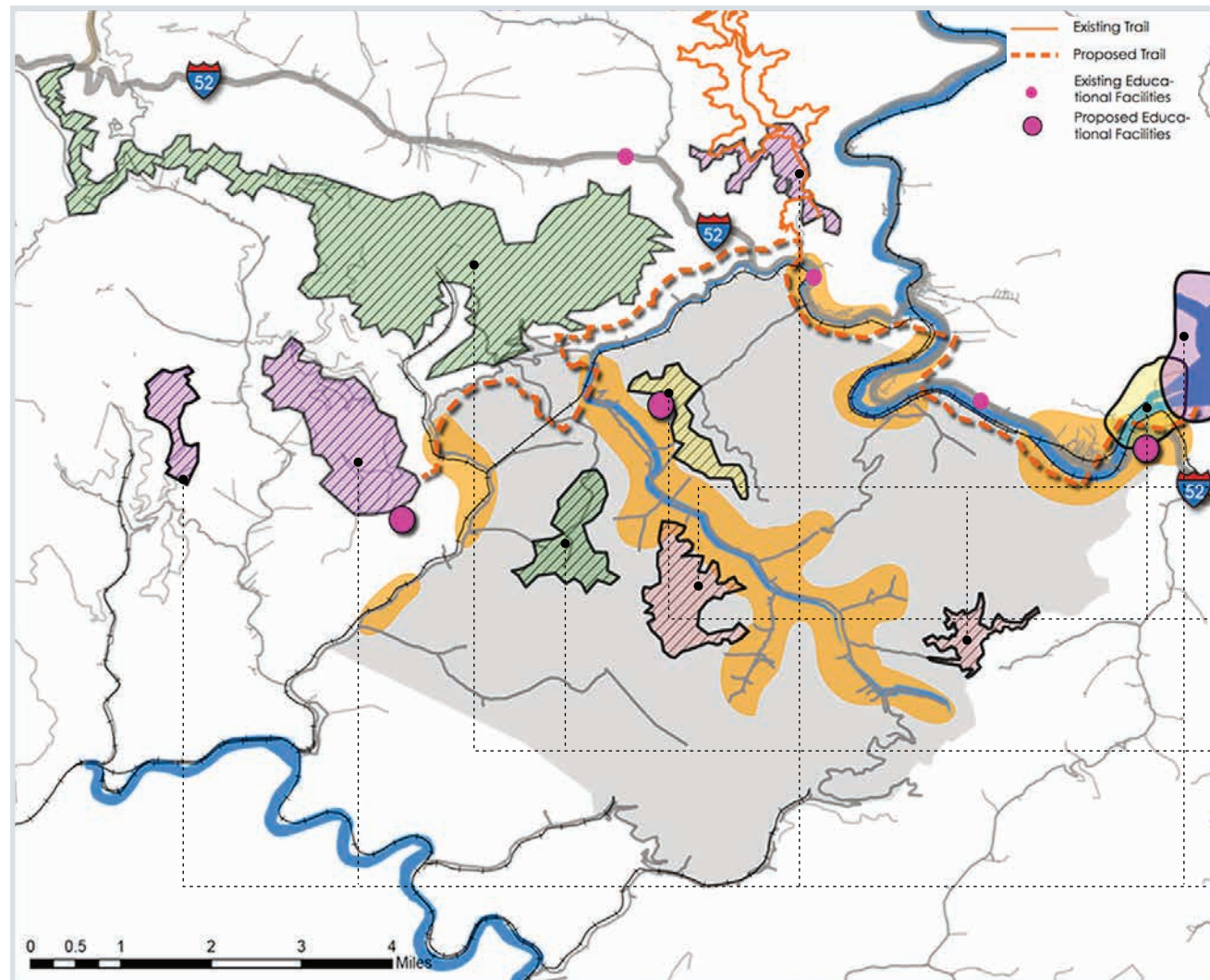


#### GILBERT CREEK



# A PLAN FOR SUSTAINABLE COMMUNITY DEVELOPMENT & ECONOMIC DIVERSIFICATION

The proposed plan to address the range of economic, ecological, and social issues in Gilbert Creek involves a holistic approach of diversifying the local economy to incorporating a range of activities to various existing mountaintop removal sites as well as other strategic areas around the town. An extensive trail system is proposed to the existing trail, which will serve to connect the newly proposed sites to the community in order to improve accessibility of the area. The trails will also offer an opportunity in recreation and tourism in the area. Finally, environmental education will be emphasized in schools, and additional facilities will be created adjacent certain proposed sites to foster understanding and increase awareness in the local environmental issues and protection efforts.



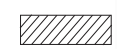
SUSTAINABLE MINING



ECOTOURISM



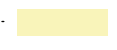
ENVIRONMENTAL EDUCATION



LANDSCAPE REMEDIATION



ECOLOGICAL INDUSTRIAL PARKS



ALTERNATIVE ENERGY PRODUCTION



MOUNTAIN AGRICULTURE



ADVENTURE TOURISM